

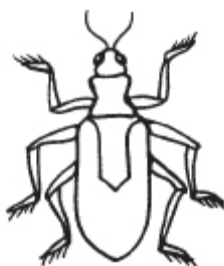
## MOUSE HOUSE CONTENTS

### On your left as you enter the mouse tunnel from the north side:

FOOD STORAGE – Mice will shell and peel seeds and nuts before storing them. A leaf is stored with the food to keep it fresh and free of bacteria. Food is kept far from the nest to prevent contamination.



BEETLE – Although mice primarily eat nuts and seeds, there are some varieties of insects they eat including beetles.



NEST – Mice live underground but their nests aren't made of dirt and mud. They are made of grass and leaves, feathers and bits of fur, similar to birds' nests.



MOUSE GOING OUT TO EXPLORE – This is a very small mouse, probably a baby. A grown mouse would almost fill the tunnel. A tight fit prevents larger predators from entering.



### On your right as you enter the tunnel:

MOUSE ENTERING TUNNEL – See above

NEST MATERIALS/NESTING STORAGE – Mice store their nest materials inside the tunnel. That way they don't have to keep going in and out to get what they need to build a nest. This not only saves time but limits how long they must be above ground, exposing them to the risk of predators. You will notice there is a larva of unknown origin hiding in the nest materials. It will probably get eaten by a mouse before it does any damage.

### Above your head:

4 ANTS – passing through the mouse's house

1 SPIDER – that might live in the tunnel, but the mouse won't eat it

1 MITE – that is looking for a home and is passing through